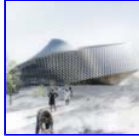


[arquiNETWORK](#): | [arquiNAUTA](#) | [arquiTOUR](#) | [Arch Tracker](#) | [arquiFOTO](#) | [Dolmen TV](#) | [Arch Mashup](#)

- [Home](#)
- [About](#)
- [Contact](#)
- [Publish](#)



[The Wolfe Den – MJ Neal Architects](#)



[National Library in Astana, Kazakhstan – BIG](#)



[Apartments on the Coast – OFIS arhitekti](#)



[Villa G – Saunders Architecture](#)



[Rosa Parks Transit Center – FTL Design Engineering Studio](#)



[Jimbocho Theatre – Nikken Sekkei](#)



[Chamber Music Hall for Manchester International Festival – Zaha Hadid Architects](#)



[Kindergarten Sighartstein – kadawittfeldarchitektur](#)

## [Arch Tracker](#)

Tracking architecture around the globe

### [John Wardle Architects and Office dA to Design Melbourne's New Architecture School Site](#)

1 retweet

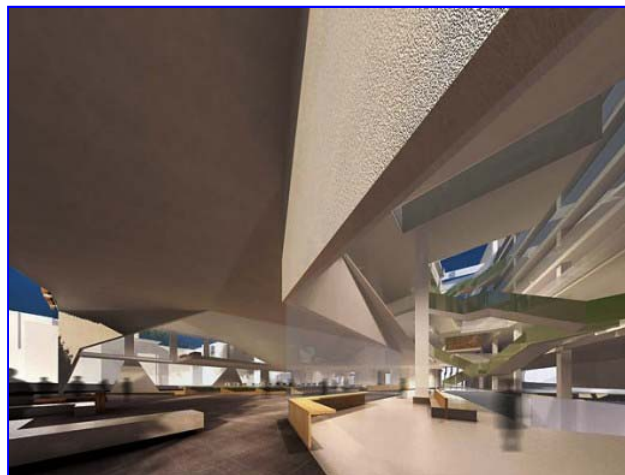
3 de Septiembre de 2009 | Autor: [admin](#)



John Wardle Architects and Office dA have been named the winners of the competition to design the landmark new Faculty of Architecture, Building and Planning site at the University of Melbourne.  
More info and images after the break.



The building will include dedicated spaces for research into sustainable precinct design and performance, along with lecture theaters, a library, exhibition, and specialist workshop spaces. It will accommodate students enrolled in the Bachelor of Environments, one of the degrees formed under the Melbourne Model, and in the Melbourne School of Design as well as provide offices for staff of the Faculty of Architecture, Building and Planning.



The competition jury noted the quality of the partnership between Melbourne-based John Wardle Architects and Boston-based practice Office dA. The Dean of the Faculty of Architecture, Building and Planning, Professor Tom Kvan, says their scheme showed a strong understanding of educational, environmental, and social issues in a design that would generate excitement for all staff and students. "The winning design showed a detailed understanding of the teaching and research activities of the Faculty and the potential for contribution to research across the campus."



Shortlisted entrants had to address four key issues central to the project: Built Pedagogy, The Academic Environment, The Design Studio, and The Living Building. In evaluating the presentations, the Jury focused on demonstrated capacity to work with the University to achieve their aspirations, a focus on design quality. The Jury, which consisted of noted architects Odile Decq (Paris) and Peter Elliott (Melbourne), the Vice Chancellor Professor Glyn Davis and Professor Tom Kvan, were highly impressed by the presentations given by all six shortlisted practices, and noted the broad range of design responses and variety of innovative approaches to research and education. The list of shortlisted finalists also included Denton Corker Marshall Pty Ltd; Diller Scofidio + Renfro; KoningEizenberg with William J Mitchell and Gehry Technologies; McBride Charles Ryan; and Sauerbruch Hutton with NH Architecture.

The John Wardle Architects and Office dA submission was selected out of 133 submissions from 15 countries. Six entrants were then selected to proceed to competition stage, with each paid to develop a conceptual response to the key issues of the brief. The competition was endorsed by the Australian Institute of Architects. Presentation boards summarizing the response from each of these entrants will be on display in the Wunderlich Gallery at the Parkville campus throughout September. Via: [Bustler](#)

[Share This](#)

**Readers who viewed this page, also viewed:**

- [Otake House – Suppose Design Office](#)
- [House in Danbara – Suppose Design Office](#)

**Related posts:**

1. [The Melbourne Recital Centre – ARM](#) Project: Melbourne Recital Centre Author: ARM Steve Ashton,...
2. [Hind House – John Pardey Architects](#) Hind House, designed by John Pardey, recently won an...
3. [House in Danbara – Suppose Design Office](#) Project: House in Kitakamakura Author: Suppose Design Office ...
4. [House in Kitakamakura – suppose design office](#) Project: House in Kitakamakura Author: Suppose Design Office ...
5. [Otake House – Suppose Design Office](#) Japan based firm Suppose Design Office, have designed a...

Related posts brought to you by [Yet Another Related Posts Plugin](#).

<b>Building Inspections Melb</b> Build&Pest Inspections From \$491 Book Online Its Easy & Fast	<b>SOA Architecture for BI</b> Manage all your BI on a single services oriented architecture
--	--

Publicado en [Architecture, Competitions, Project](#) | Etiquetas: [competition](#), [dA](#), [John Wardle](#), [Melbourne](#)  
 « [d3 Housing Tomorrow competition](#)  
[Rotterdam City Hall Competition shortlist announced](#). »

**Deja un comentario**

\_\_\_\_\_  
Nombre (requerido)

\_\_\_\_\_  
E-mail (no se publicará) (requerido)

\_\_\_\_\_  
Sitio Web

Enviar comentario

**Social Networks**



Search in Arch Tracker

Subscribe by email

Search

Subscribe

Friends